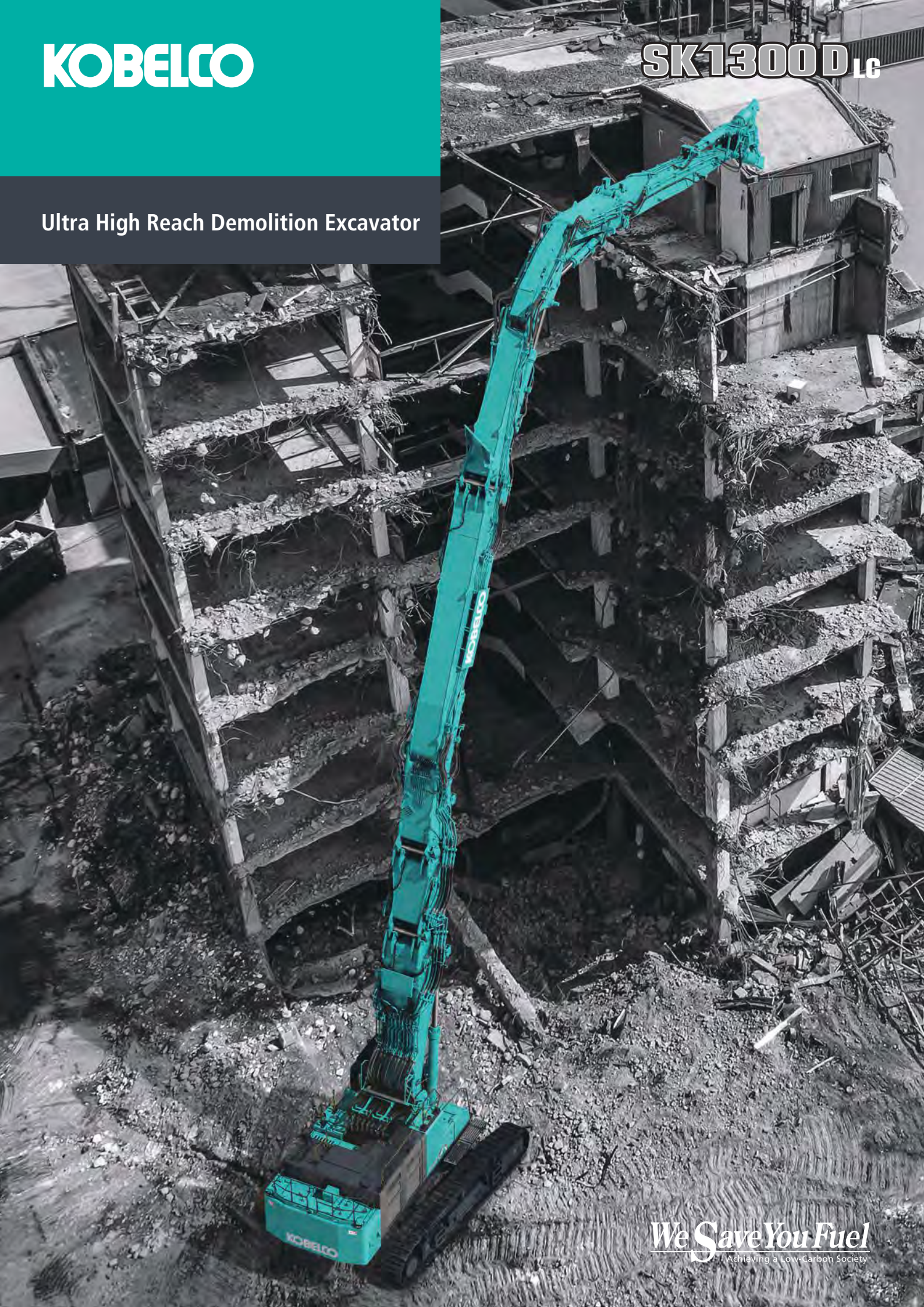


KOBELCO

SK1300 D_{LC}

Ultra High Reach Demolition Excavator

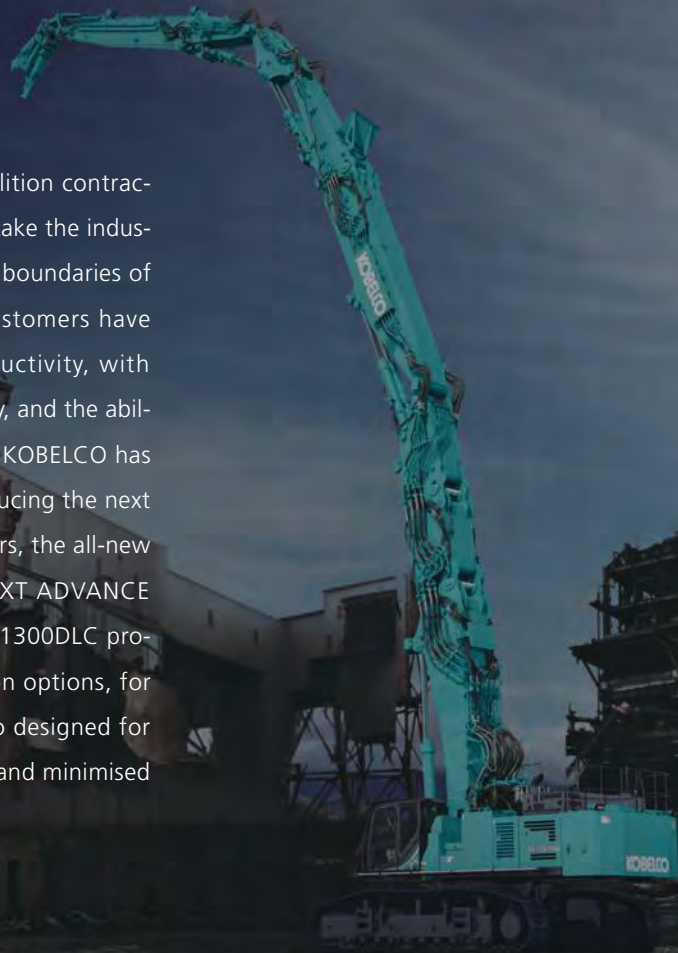


We Save You Fuel
Achieving a Low-Carbon Society

The New Standard in Ultra High Reach Excavators

Reach new heights in demolition.
Introducing the SK1300DLC: Where power meets versatility.

KOBELCO has worked closely with building demolition contractors to identify challenges and to find solutions to take the industry to the next level, while continuing to push the boundaries of what is possible with demolition excavators. Customers have asked for machines that provide superior productivity, with improved stability and greater tool carrying capacity, and the ability to use more powerful crushers at new heights. KOBELCO has once again responded to these challenges—introducing the next generation of ultra-high reach demolition excavators, the all-new SK1300DLC. Featuring the newly developed NEXT ADVANCE 4-piece high reach demolition attachment, the SK1300DLC provides a wide variety of boom and arm combination options, for whatever the job requires. The SK1300DLC is also designed for ease of transportability, featuring increased safety and minimised work preparation time.



Ultra-high reach, with multiple boom and arm configurations providing flexibility.



- 4-piece ultra long attachment specification [40m type / 35m type]
- 3-piece ultra long attachment specification [35m type / 31m type]
- Separate boom specification with insert
- Separate boom specification [for maximum tool weight and ground level processing]

SK1300D_{LC}



Achieve a higher level of productivity. Reach new heights, with greater tool capacity.

4-piece ultra long attachment specification



Equipped with NEXT ADVANCE, a flexible configuration ultra-high reach demolition attachment solution.

The new NEXT ADVANCE high reach demolition attachment was developed to achieve greater working heights, with improved tool capacities. The unique new articulated structure of the 4-piece high reach demolition attachments make it possible to greatly overcome current operational limits of other 100 ton-class machines.

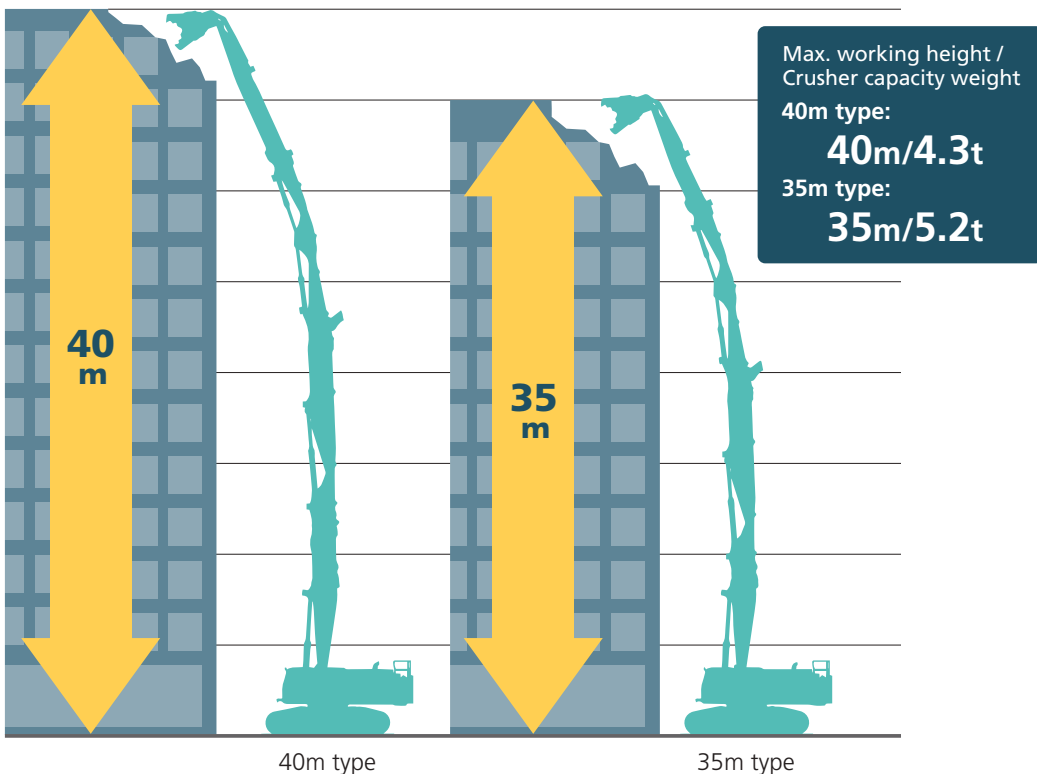
Exclusive articulated insert boom

One example of the new NEXT ADVANCE technology is the introduction of articulation joints to the insert boom. By keeping the centre of gravity of the overall machine lower, even larger crushers can be used without the need to increase overall base machine weight.

Quick hitch piping equipped as standard

Choose from 40m and 35m reach configurations

Adding a 4-piece boom configuration to the 100t class has allowed a max reach of 40m—previously limited only to larger machines. Choose the 35m boom configuration to support even larger crushers.



3-piece ultra long attachment specification

Two arm lengths for job site flexibility

The 3-piece high reach attachment is available with a 35m and 31m configuration. Front arms of differing lengths are available, with a common attachment design allowing interchangeability. Working height and the maximum attachment mass can be adjusted to suit the application by simply changing the front arm.

35m type : 8.9m front arm

31m type : 6.8m front arm

Large working radius utilises machine's full reach capability

The 3-piece attachment configuration provides a wide working radius, with a large margin of stability in the longitudinal direction, allowing the operator to take full advantage of the longer reach. At the same time, the maximum allowable attachment weight has been increased. Quick hitch piping is equipped as standard.

Crusher capacity weight

35m type : **5.0t** (4.4t) 31m type : **6.1t** (5.3t)

* () indicates crusher weight capacity with quick hitch installed

Working range

(For 35m type)

Max. working height (Arm top):

Approx. **35m**



Max. permissible working reach (Along): **21.4m**

Powerful large diameter cylinders



Powerful large diameter cylinders

The boom cylinders now use a large diameter cylinder, and the cylinder mount position has been optimised — improving lifting power and allowing heavier attachments.

Quick hitch piping equipped as standard

Dedicated quick hitch piping is equipped as standard, allowing the installation of a quick hitch, for easy attachment changes.

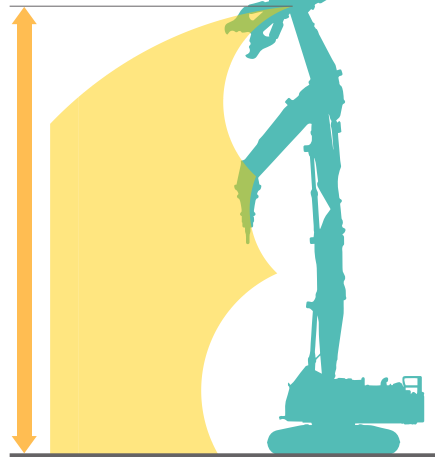


Separate boom specification with insert

Wide working range from high reach to ground level

A wide working range envelope is achieved, with no limits on the angle of the main boom during demolition operations. The boom and arm sections can be completely lowered, allowing secondary demolition and heavy dismantling operations at ground level.

■ Working range



Max. working height (Arm top):
Approx. **23.6m**

Max. permissible working reach (Along): **15.1m**



Crusher capacity weight

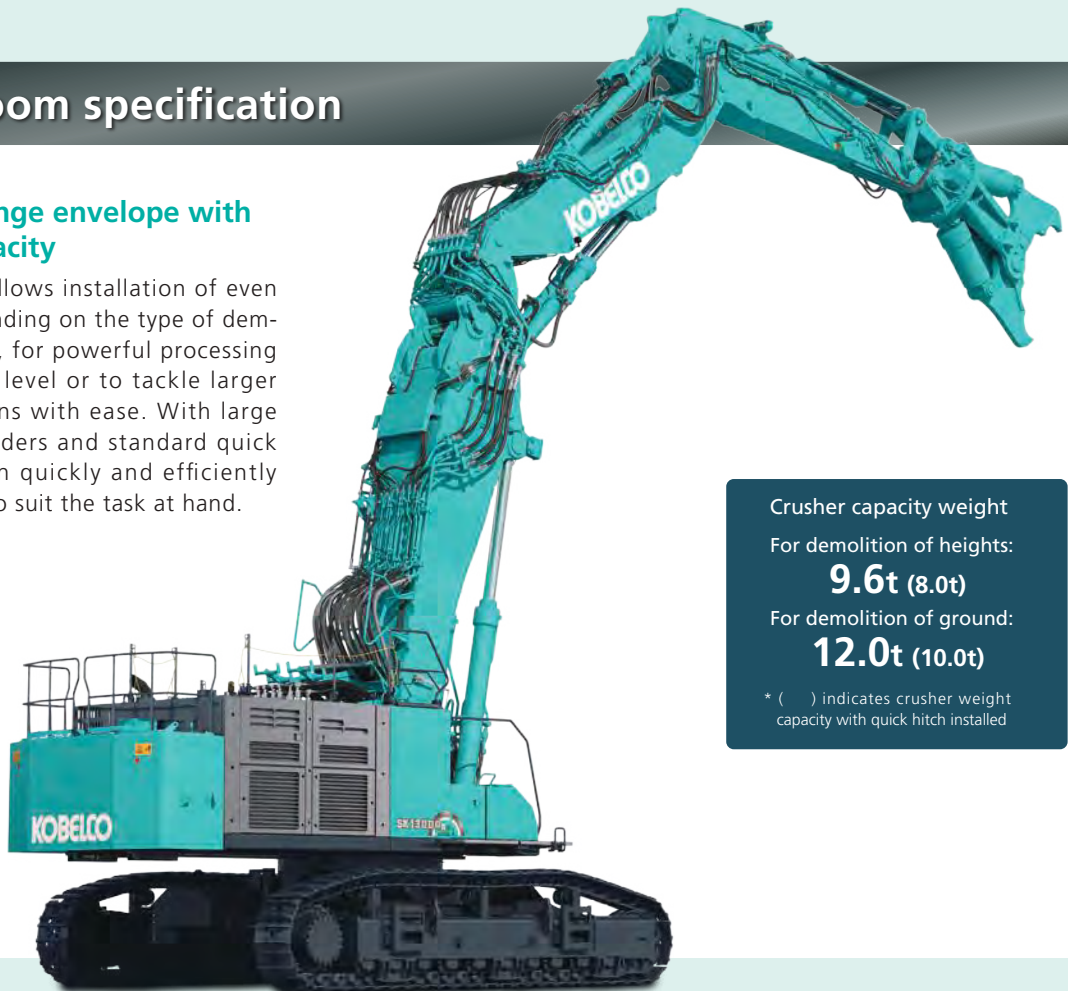
9.6t (8.0t)

* () indicates crusher weight capacity with quick hitch installed

Separate boom specification

Wide working range envelope with powerful lift capacity

The separate boom allows installation of even larger crushers, depending on the type of demolition work required, for powerful processing capability at ground level or to tackle larger sub-grade foundations with ease. With large diameter lifting cylinders and standard quick hitch piping, you can quickly and efficiently change attachments to suit the task at hand.



Crusher capacity weight

For demolition of heights:

9.6t (8.0t)

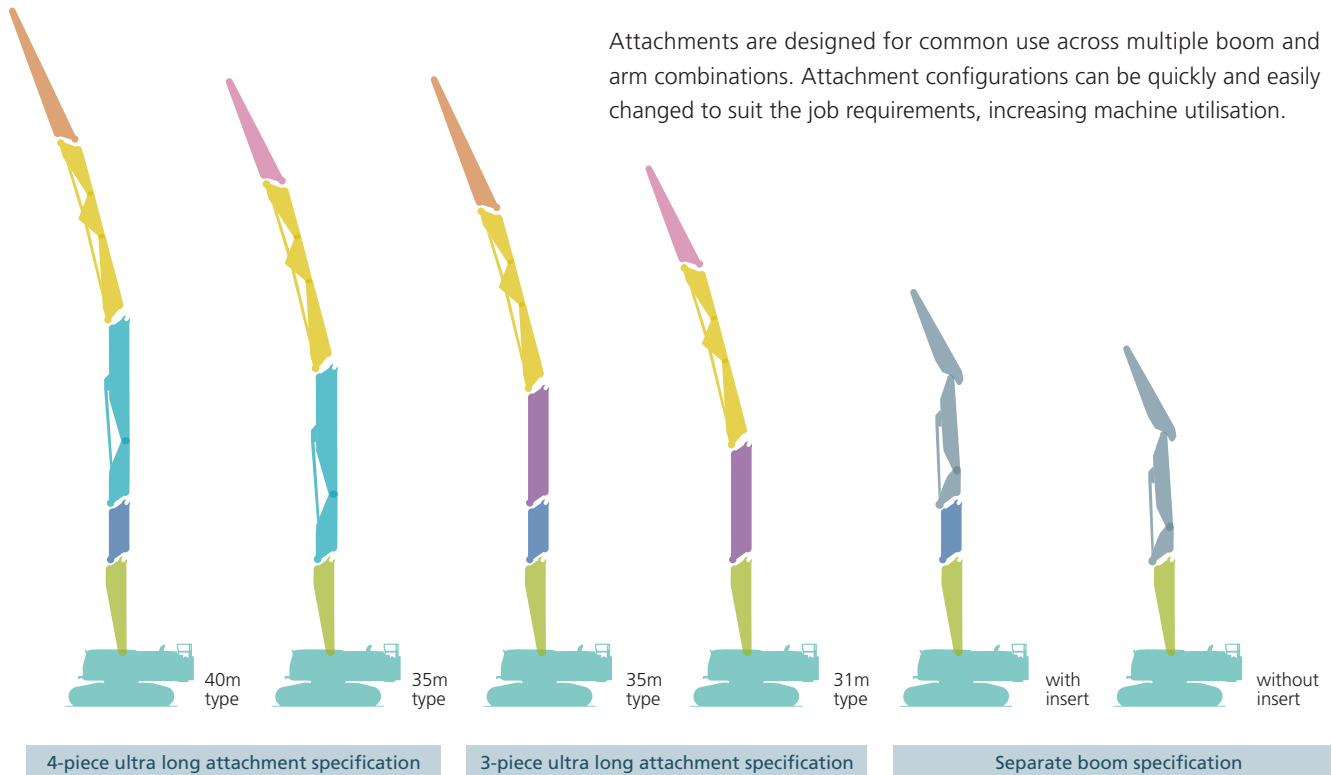
For demolition of ground:

12.0t (10.0t)

* () indicates crusher weight capacity with quick hitch installed

Attachment configuration to maximise cost reduction.

New attachments designed for standardisation across multiple configurations



Attachment lineup and compatibility

* Same colored attachments can be commonly used.

	4-piece ultra long attachment specification		3-piece ultra long attachment specification		Separate boom specification	
	40m type	35m type	35m type	31m type	with insert	for demolition of heights / for demolition of ground
Front arm (semi long)	●		●			
Front arm (STD)		●		●		
Inter boom section	●	●	●	●		
Insert boom with joint	●	●				
Insert boom (long)			●	●		
Insert boom (short)	●		●		●	
Separate boom (unified arm)					●	●
Main boom (with sub-frame)	●	●	●	●	●	●

Modular design allows easy transport, with fast setup and disassembly.

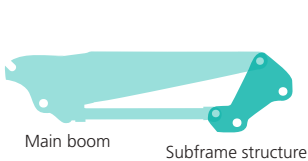
Subframe structure enables 32-ton transportation

The main boom attachment point uses a unique modular subframe structure with a simple alignment mechanism that allows easy removal and installation of the main boom structure when required. The guide structure and the hydraulic pin make it easy to remove and install the main boom, achieving a base machine transportation mass of 32 tonnes or less, simplifying transport in urban environments.

Main boom disassembly time: **Approx. 2 hours**

Transportation mass of base machine: **Approx. 32t**

(Height: Approx. 4.1m <including trailer bed>, Width: Approx. 3.2m)



Subframe installation/removal guide simplifies alignment



New arm connection design reduces assembly time

A newly developed split arm design simplifies installation of arm segments. A hook structure with separate opposing pins and a guide are used in conjunction with a hydraulic pin connection to reduce the time required for assembly and disassembly.



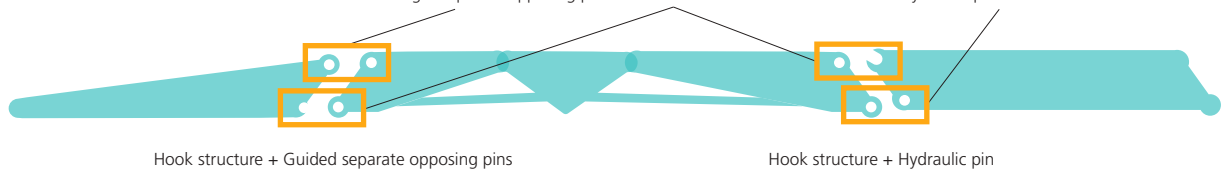
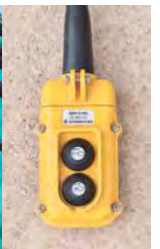
Left/right separate opposing pins



Connection hook

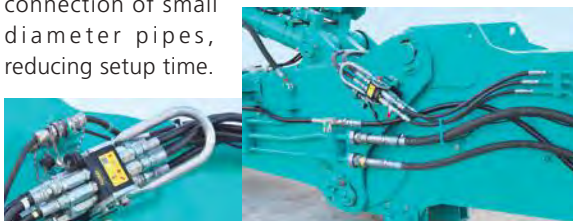


Hydraulic pin / Remote control



Safe and quick hydraulic connection

Hydraulic pipes are installed on the left and right sides of the attachment for improved reliability and ease of assembly. During assembly and disassembly, hydraulic connectors can be safely coupled without the need to climb on top of the attachment. A single action multi-line coupler system has been implemented for the connection of small diameter pipes, reducing setup time.

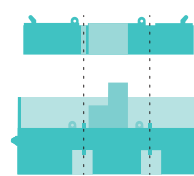


Two piece counterweight with steps

A two-piece counterweight design improves ease of transport. Both counterweights are encased in a single frame; the lower counterweight incorporates a stepped design to improve accessibility for assembly and disassembly.

Upper weight: **Approx. 7,8t**

Lower weight: **Approx. 14.1t**





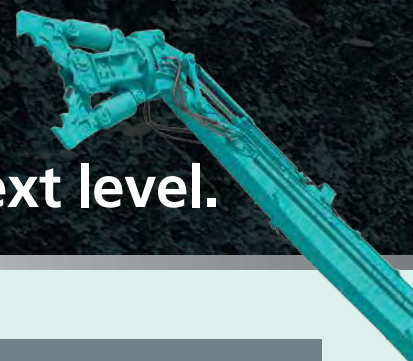
Translifter with synchronised four-leg control

A translifter for quickly and safely assembling/disassembling the lower car body of the base machine and the crawler frame is equipped as standard. The translifter includes synchronised four-leg control, making individual leg operation unnecessary.



4-piece ultra long attachment specification

Unbeatable performance, functionality and versatility take demolition to the next level.



Operator station designed for all-day comfort and reduced fatigue

The standard tilting demolition spec cabin includes front and top guards, for excellent visibility and safety. The spacious operator station minimises operator fatigue with its modern design and comfort inclusions.



Air-suspension seat with supportive back and neck rest reduces fatigue.



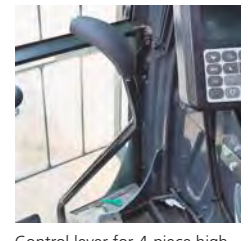
A 30-degree cab tilt angle provides the optimum viewing position when the application requires long periods of working at heights.



Operator station with a wide field of vision, for improved safety



Skylight with wide opening roller shade



Control lever for 4-piece high reach demolition spec machine placed in the foot area

Stage V compliant engine

A new electronically controlled engine with high power and low fuel consumption is installed. Particulate matter and NOx emissions are suppressed through the engine's high combustion efficiency, exhaust gas after-treatment equipment, and urea SCR system. The engine also conforms to EU Stage V regulations.



AdBlue® tank



Multiple cameras standard, for increased operator awareness

In addition to being able to see areas around the machine not visible to the naked eye, the operator can also quickly check demolition objects located near the crusher blade from the operator's seat. Cameras are equipped in four spots on the base machine (rear, right, and left sides, and under the upper machine body) and a camera is also equipped at the tip of the arm. Two dual-display monitors are provided, showing the feeds from four cameras simultaneously. The operator can easily switch the video feeds with the rotary switch.

Left image (main body)



Left-side camera

Rear image (main body)



Rear view camera

Right image (main body)



Right-side camera



Selected image 1 (under the upper body)



Camera under the upper frame

Selected image 2

Selected image 3



Arm camera

Wide-angle camera

Magnifier camera

*The front attachment camera is only installed on the high reach demolition attachment/equipment machine.
*Only the picture from the front attachment camera can be switched.



Cab interference prevention system improves operator efficiency

Because there is no danger of the crusher contacting with the cab, the operator can confidently perform lever control even around the base of the machine. With highly accurate interference position detection, a wide working area is obtained during arm-retracted operation. Work can proceed smoothly.

■ System movement

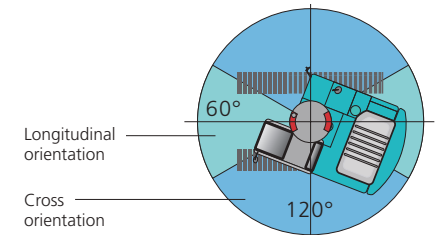
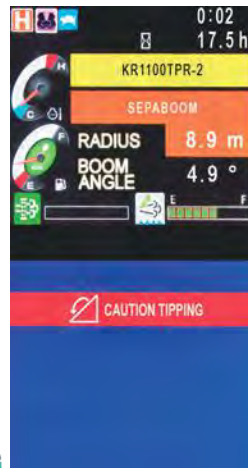
If the top of the arm or other part of the front attachment comes within a certain distance of the cab, the interference alarm sounds just before contact and operation gently stops automatically.



* The photo is of the SK400DLC.

Tip-over warning device with longitudinal/horizontal orientation detection

The device determines the danger of tipping from the posture and swing angle of the attachment, and it informs the operator with an audible alarm and a warning on the screen if the machine is in a dangerous position. The danger range for tipping differs depending on the upper orientation, due to changes in the level of safety clearance from the swing angle. In longitudinal orientation, a larger maximum working radius can be obtained.



Longitudinal orientation

Cross orientation

4-piece ultra long attachment specification

Demolition ready. Standard factory options, built ready to work.

Safety improvements



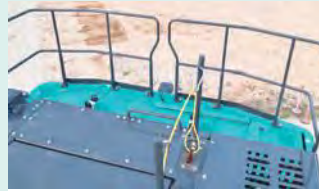
LED lights

High intensity LED working lights are provided on the front, as well as two cab lights and a boom light.



Debris deflector

(high reach demolition specification)
Increases operator safety by preventing falling demolition debris from colliding with the cab.



Handrail (+ stanchion)

Maintains safety for work on the counterweights via a stanchion and wire rope.



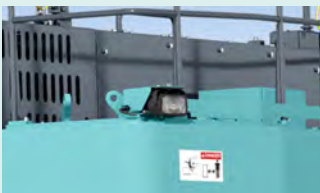
Public address system (PA system)

Maintains safety by alerting workers in the area with clear audio quality.



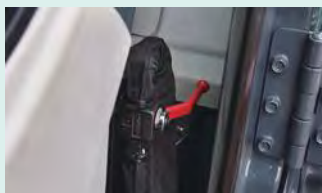
Lower entry/exit step

Ladder-type steps equipped in the front and back of both left and right crawlers.



Swing flasher

The swing warning lamp helps prevent collisions and accidents while the upper body is turning.



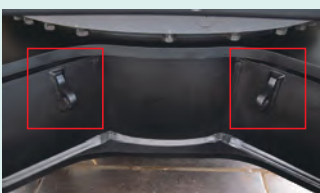
Cab emergency lowering device

Even in an emergency, the cab can be lowered by operating the dedicated lever.



Boom emergency lowering device

Controls to automatically lower the attachment when the engine fails.



Tie down points

Equipped with brackets for lashing during transportation on the lower car body.



Separate boom specification with insert

Improved maintainability



Reversible cooling fan

Reliability is improved with the automatic reversing fan, which reduces build-up of debris on the cooling package.



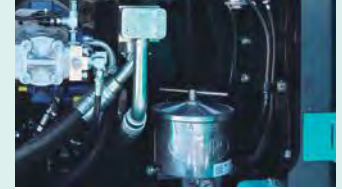
Maintenance walkway

A wide walkway is provided, allowing easy access to inspection and maintenance points.



Removable catwalk

Catwalks are provided on both the left and right sides of the base of the machine, allowing easier access for maintenance.



Case drain filter

A first for the class, a hydraulic case drain filter is equipped for improved filtration and reliability.



Electric lubrication system

The factory installed auto-greaser provides automatic lubrication of machine and attachment pins.



Fuel supply pump

Quickly and easily fuel the machine from ground level using the onboard automatic fuel pump.



Cab tilt maintenance stopper

Cab tilt lock for greater safety during tilt mechanism maintenance.



Improved reliability and durability



Hydraulic lock valves

Boom and arm cylinders are equipped with hydraulic holding valves, for increased safety.



Water sprinkler with two nozzles

A two-nozzle water sprinkler is provided on the upper right section of the arm.



Battery shut-off device

Battery cut-off switch prevents battery discharge over long periods.



Bucket cylinder guard

Bucket cylinder guarding is installed to prevent damage during demolition operations.



Jib cylinder guard*

Jib cylinder guarding is installed to prevent damage during demolition operations.



Boom cylinder guard*

Boom cylinder guarding is installed to prevent damage during demolition operations.



Upper frame under cover guards

The 6mm thick reinforced cover protects the engine and components.



Swivel guard

The lower car body structure is fitted with a 9mm thick reinforced cover.

* Option for separate boom specification machines.

Engine

Model	HINO E13CYM-KSDB
Type	Four-stroke liquid-cooled direct injection diesel turbo charged with intercooler. (Stage V-compliant engine)
No. of cylinders	6
Bore and stroke	137 mm x 146 mm
Displacement	12.913 L
Rated power output	380 kW / 1,800 min ⁻¹ (ISO 14396)
Max. torque	2,120 N·m / 1,300 min ⁻¹ (ISO 14396)

Hydraulic system

Pump	
Type	Variable displacement piston pumps + gear pump
Max. discharge flow	2 x 504 L/min 1 x 49.3, 1 x 30.1 L/min
Relief valve setting	
Excavating circuit	33.0 MPa
Power Boost	34.0 MPa
Travel circuit	33.0 MPa
Swing circuit	33.0 MPa
Control circuit	5.0 MPa
Pilot control pump	Gear type
Main control valves	11-spool
Oil cooler	Air cooled type

Swing system

Swing motor	Two fixed capacity axial piston pump
Swing brake	Hydraulic
Parking brake	Wet multiple plate
Swing speed	3.6 min ⁻¹ (Ultra long attachment) 6.0 min ⁻¹ (Separate boom)
Tail swing radius	4,820 mm

Travel system

Travel motors	Two variable capacity type axial piston pump With counter balance valve
Travel brakes	Hydraulic brake
Parking brakes	Wet multiple plate
Travel shoes	55 each side
Travel speed (high / low)	4.2 / 2.7 km/h
Gradeability	18% {10 deg}

Cab & control

Cab	Sealed steel type with 3-sided guard (DS cab)
Control	Engine: Rotation speed control by turning the accelerator dial. Travel : Move each track back and forth independently by moving the two levers back and forth. Operation : Two left and right levers control four movements, two pedals on the left and right control two movements

Refilling capacities & lubrications

Fuel tank	960 L
Cooling system	62 L
Engine lubricant	54 L
Hydraulic oil tank	599 L tank oil level 1,070 L hydraulic system
DEF/Urea tank	83 L

Operating Weight & Ground Pressure

Attachment Type	NEXT ADVANCE 4-piece Ultra long attachment		
	40m type	35m type	
Operating Weight	136,900 kg	132,900 kg	
Ground Pressure	170 kPa	165 kPa	
Attachment Type	3-piece Ultra long attachment		
	35m type	31m type	
Operating Weight	130,500 kg	126,600 kg	
Ground Pressure	162 kPa	157 kPa	
Attachment Type	Separate attachment		
	with insert boom	for demolition of heights	for demolition of ground
Operating Weight	131,400 kg	126,600 kg	129,000 kg
Ground Pressure	163 kPa	157 kPa	160 kPa

*Counter weight & max. front attachment mass including.

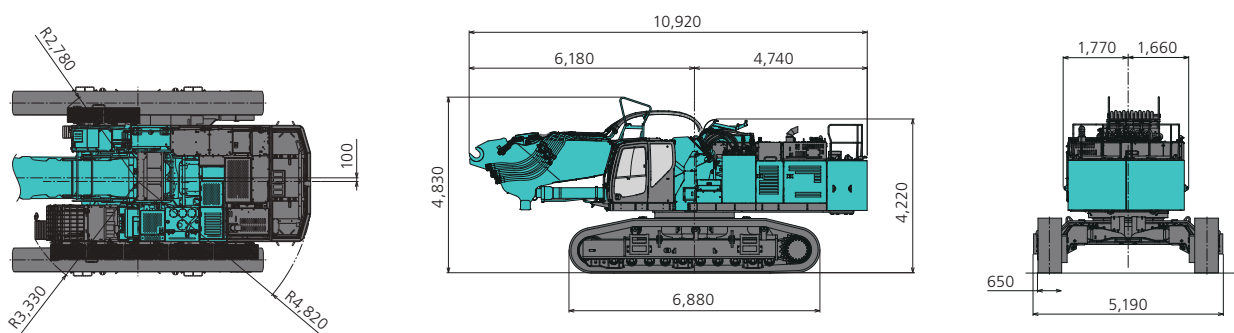
Max. tool weight

NEXT ADVANCE 4-piece Ultra long attachment	
40m type	4,300 kg
35m type	5,200 kg
3-piece Ultra long attachment	
35m type	5,050 kg
31m type	6,100 kg
Separate attachment	
with insert boom	9,600 kg
for demolition of heights	9,600 kg
for demolition of ground	12,000 kg

Dimensions

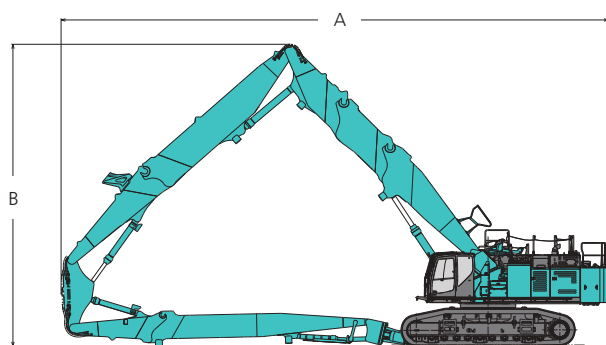
Dimensions (base machine + base boom)

Unit: mm



Assembled machine dimensions

● NEXT ADVANCE 4-piece ultra long attachment specification

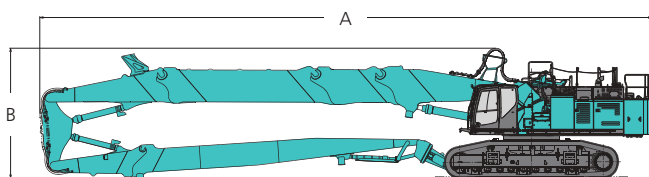


*The posted figure is 40m type

Unit: mm

	40m type	35m type
A: Overall length	21,540	19,790
B: Overall height of ATT	11,890	10,720

● 3-piece ultra long attachment specification

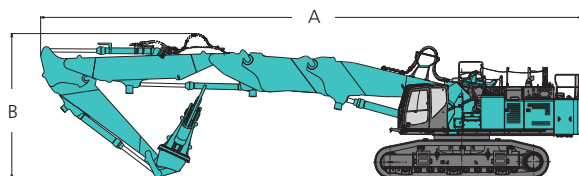


*The posted figure is 35m type

Unit: mm

	35m type	31m type
A: Overall length	24,090	21,550
B: Overall height of ATT	5,120	5,120

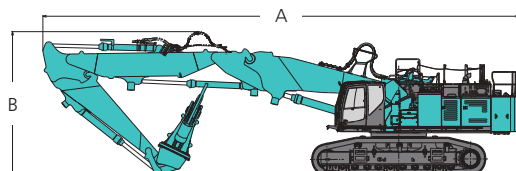
● Separate boom specification with insert



Unit: mm


	Separate boom + Insert
A: Overall length	21,300
B: Overall height of ATT	5,730

● Separate boom specification



Unit: mm

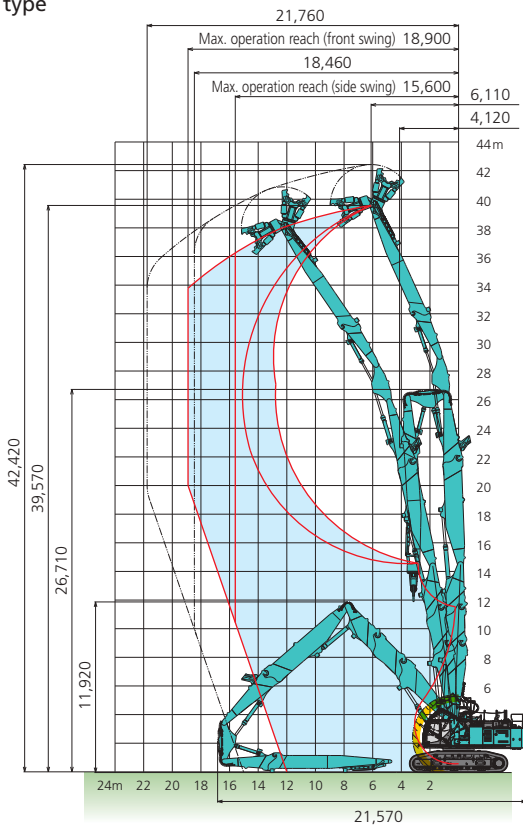
	For demolition of heights	For demolition of ground
A: Overall length	18,730	
B: Overall height of ATT	5,700	

 Working Ranges

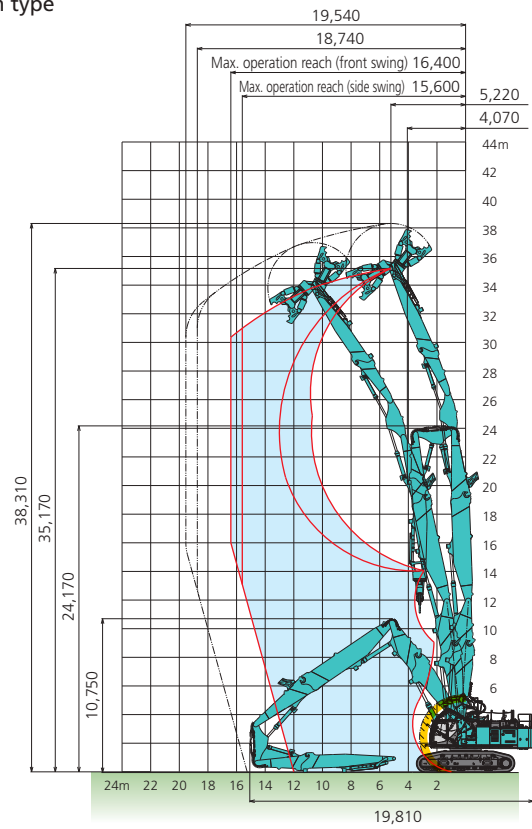
■ NEXT ADVANCE 4-piece ultra long attachment specification

Unit: mm

● 40m type



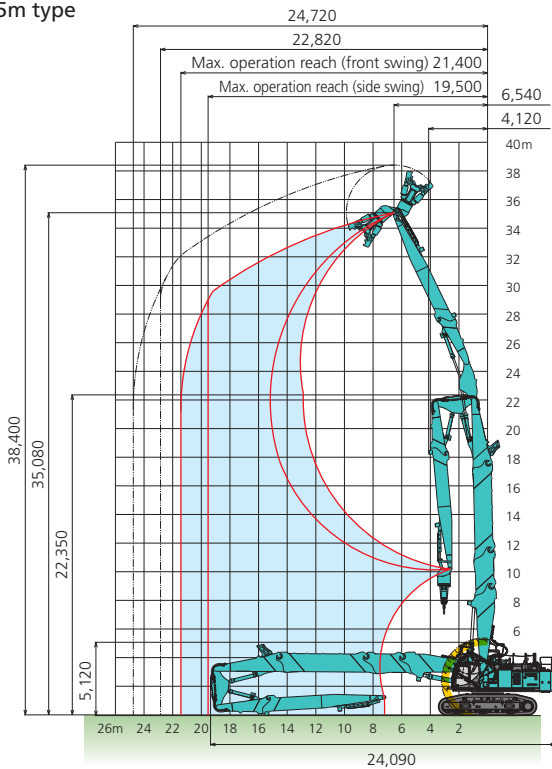
● 35m type



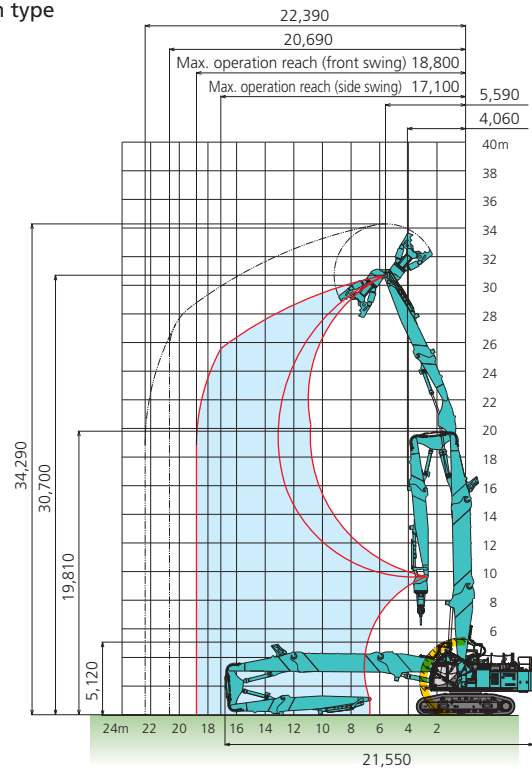
■ 3-piece ultra long attachment specification


Unit: mm

● 35m type



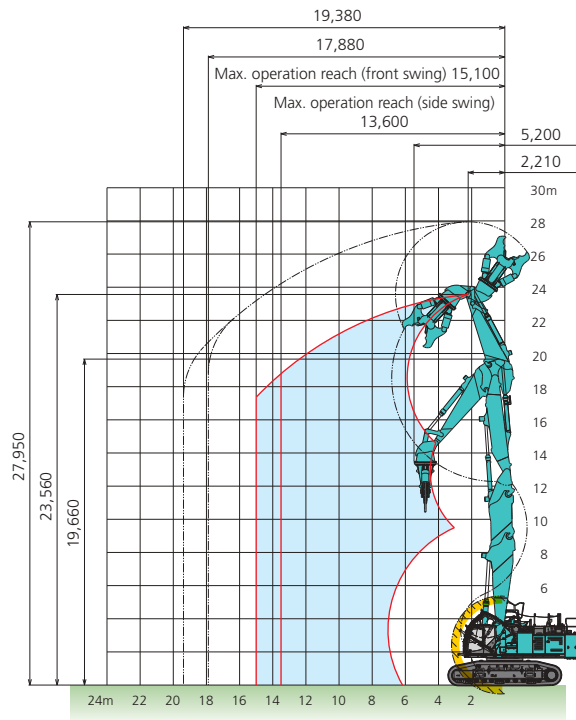
● 31m type



*Without including height of shoe lug.  *Cab interference prevention system operating area. *The numeric values for the blade are the values for when a Kobelco end attachment is mounted.

Separate boom specification with insert

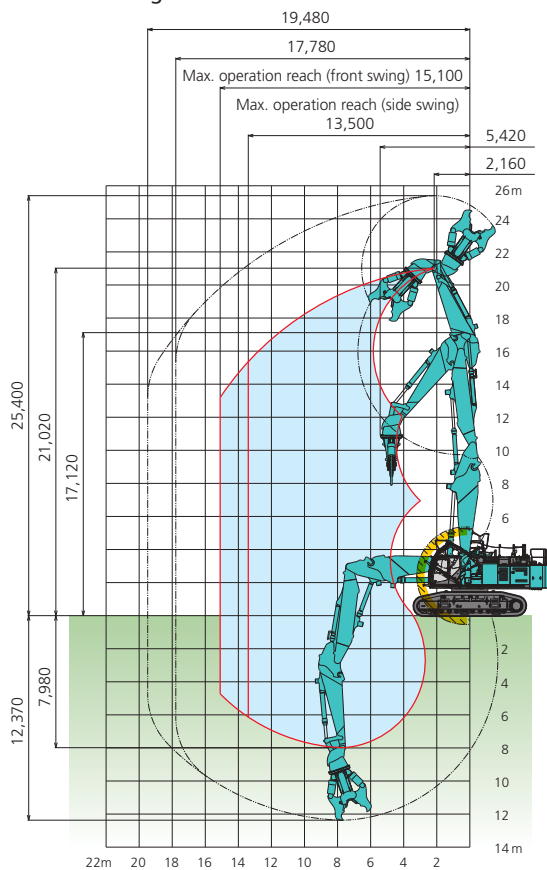
Unit: mm



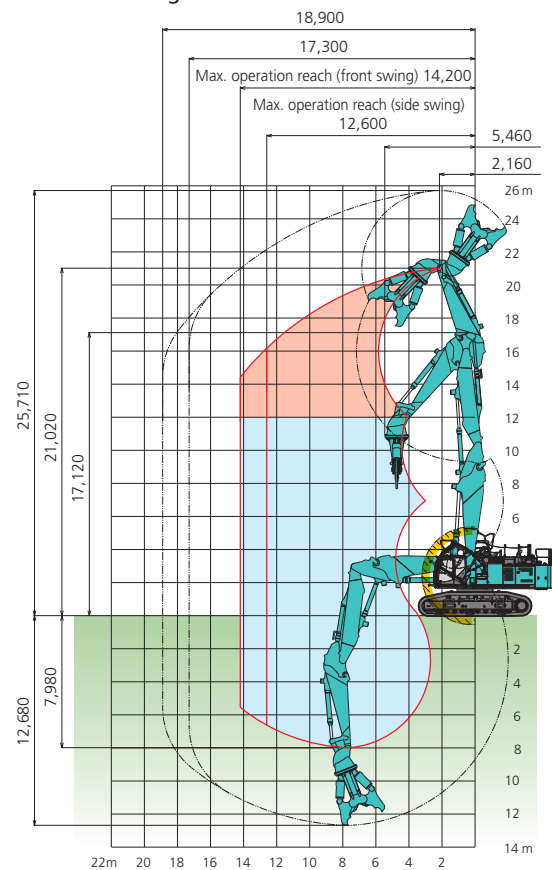
Separate boom specification

Unit: mm

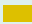
● For demolition of heights



● For demolition of ground



Indicates the region where, depending on the posture, the cylinder cannot be held.

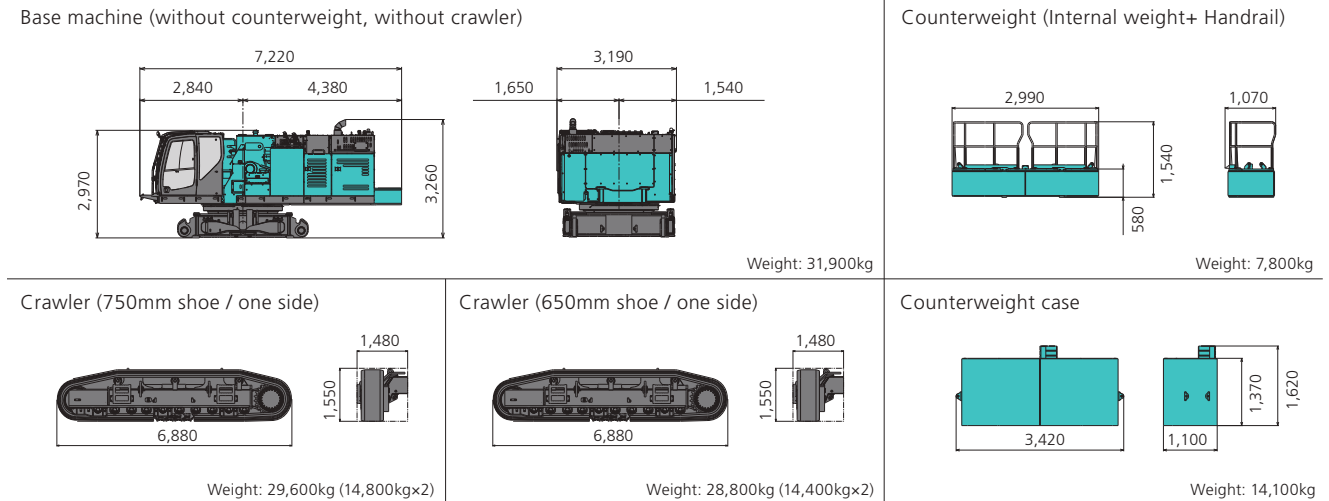
*Without including height of shoe lug.  *Cab interference prevention system operating area. *The numeric values for the blade are the values for when a Kobelco end attachment is mounted.

Dimensions

Dimensions and mass when disassembled

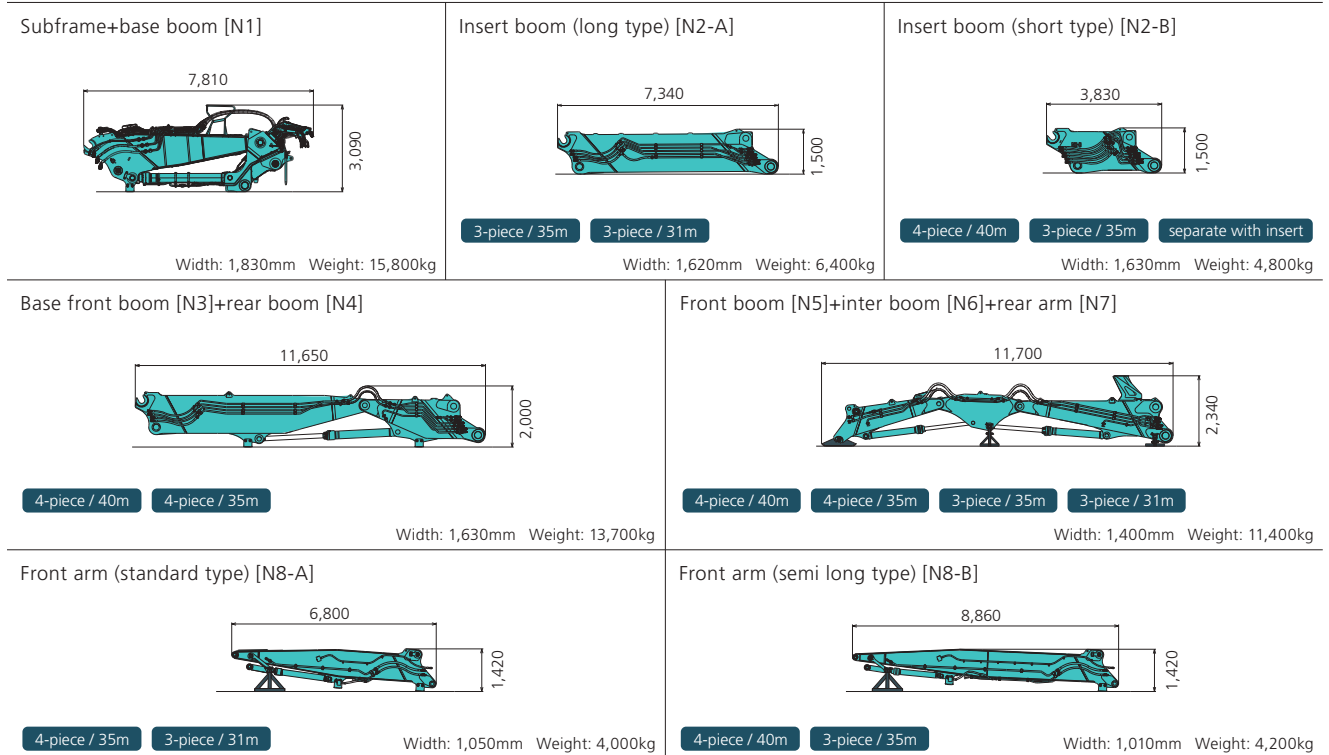
● **Base machine**

Unit: mm



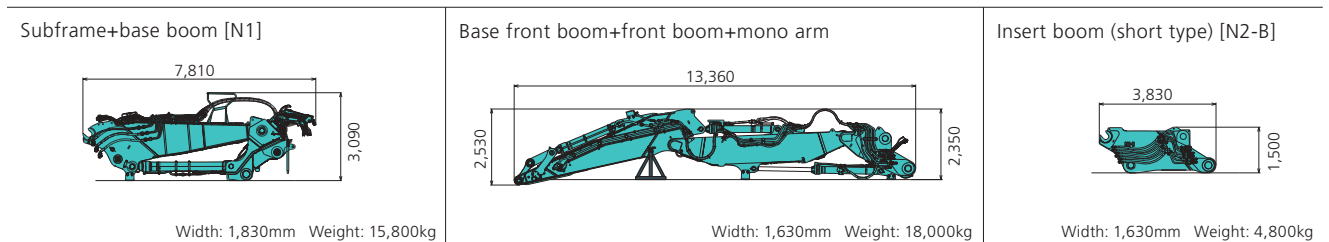
● **Ultra long attachment**

Unit: mm



● **Separate attachment**

Unit: mm



STANDARD EQUIPMENT

Note: Standard and optional equipment may vary. Consult your KOBELCO dealer for specifics

ENGINE

- Turbocharged and inter-cooled HINO E13CYM-KSDB stage V Diesel engine
- Automatic engine deceleration
- Reversible cooling fan
- Auto Idle Stop (AIS)
- Batteries (2 x 12V - 176Ah)
- Starting motor (24V - 7kW), 90amp alternator
- Removable radiator clean-out screen
- Automatic engine shut-down if low engine oil pressure
- Side by side oil, hydraulic and engine radiators
- Double-element air cleaner

CONTROL

- Working mode selector (H-mode, S-mode and ECO-mode)
- Extra piping (proportional hand controlled)
- Power Boost (34.0MPa)
- Refueling pump

HYDRAULIC

- Auto warm-up system
- Hydraulic oil cooler
- Hydraulic oil filter condition indicator
- Hydraulic oil for cold climates
- Quick hitch piping
- Multi controller
- Multi-coupler (QH line x 2, rotation line x 2, jib & arm pilot line x 2, drain x 1)

SWING SYSTEM & TRAVEL SYSTEM

- Swing rebound prevention system
- Automatic swing brake
- Two-speed travel with automatic down shift
- Sealed & lubricated track links
- 650mm track shoes
- Grease-type track adjusters
- Hydraulic retractable crawler
- Track guides
- Translifter

MIRRORS, LIGHTS & CAMERAS

- Rear-view camera, left and right side camera, rear-under-view camera
- Attachment camera (ultra long attachment: 2)
- Additional two monitors
- Working lights (LED: 2 on the upper body, 2 on the cab)
- Attachment front work light (LED: separate boom: 2, ultra long attachment: 2)
- Cab foot light
- Cab foot mirror
- Swing flashers
- Yellow flasher lights (2 on upper frame)

CAB & CONTROL

- Tilt cab
- Demolition special cab
- Air suspension seat with heater & armrests
- Headrest
- Retractable 3-inch seatbelt
- Electric horn
- All-weather, sound-insulated cab
- P5A glass
- Easy to read multi-display monitor
- Automatic climate control
- Defroster
- Bluetooth® installed radio (AM/FM Stereo with speakers)
- Luggage tray
- Large cup holder
- Detachable two-piece floor mat
- Handrails
- Wiper (top and front window)
- Top window washer
- Emergency escape hammer
- Attachment pressure release system
- 12V power source

GUARDING & SAFETY

- Tip-over warning device
- Cab interference prevention system
- Boom, arm, jib holding valves
- Second boom cylinder holding valves (4-piece ultra long attachment)
- Boom emergency lowering device
- Slow return check valves
- 6mm thick upper frame under cover guards
- Electric lubrication pump system
- Rotation and N&B auxiliary circuits and piping
- Falling object deflector (separate boom)
- One way call
- Remote machine monitoring system "GEOSCAN"
- Cab tilt operation alarm
- Cab emergency lowering device
- Crosspiece for operator safety in cab
- Console tilt
- Cab tilt maintenance stopper
- Battery shut-off function
- Travel alarm
- Catwalk (left, right front)
- Tool box
- Dual system water spray
- Emergency accel dial
- Emergency manual valve for lowering attachment
- Emergency manual valve for lowering cab
- Over load alarm (separate boom)

OPTIONAL EQUIPMENT

- Boom cylinder cover (separate boom)
- Jib cylinder cover (separate boom)
- NEXT Removal/inst. jib
- 750mm track shoes
- Custom paint colours



*AdBlue® is a registered trademark of the Verband der Automobilindustrie e.V. (VDA). * Bluetooth® is a registered trademark of the Bluetooth SIG Inc.
Note: This catalog may contain attachments and optional equipment that are not available in your area. And it may contain photographs of machines with specifications that differ from those of machines sold in your areas. Please consult your nearest KOBELCO distributor for those items you require.
Specialist equipment is needed to use this machine in demolition work. Before using it please contact your KOBELCO dealer.
Due to our policy of continuous product improvements all designs and specifications are subject to change without advance notice.
Copyright by **KOBELCO CONSTRUCTION MACHINERY CO., LTD.** No part of this catalog may be reproduced in any manner without notice.

KOBELCO CONSTRUCTION MACHINERY CO., LTD.

5-15, Kitashinagawa 5-chome, Shinagawa-ku, Tokyo 141-8626 JAPAN
Tel: +81 (0) 3-5789-2146 Fax: +81 (0) 3-5789-2135
www.kobelcocm-global.com

Inquiries To: