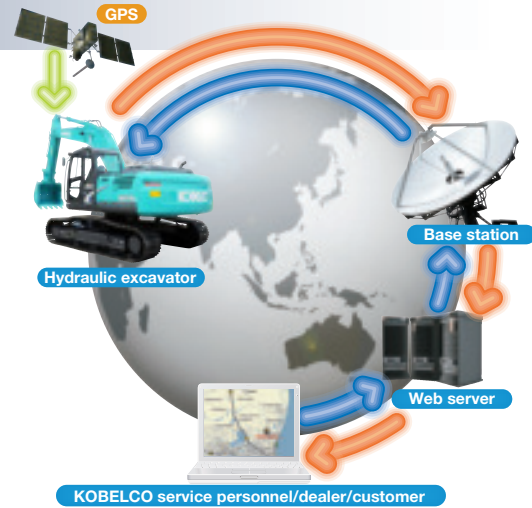


GEOSCAN

Excavator Remote Monitoring System

Remote Monitoring for Peace of Mind

GEOSCAN is the remote monitoring system for Acera Geospec series excavators. When a hydraulic excavator is fitted with this system, data on the machine's operation, such as operating hours, location, fuel consumption, and maintenance status can be obtained remotely.



Direct access to operational status

Location data

- Accurate realtime location data can be obtained even from sites where communications are difficult.



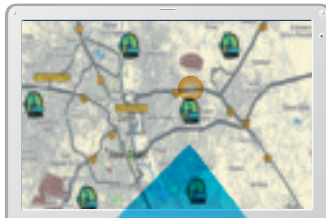
Latest location



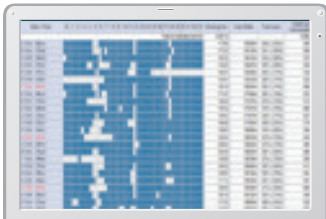
Location records

Operating hours

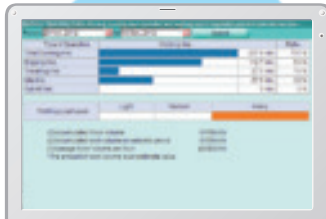
- A comparison of operating times of machines at multiple locations shows which locations are busier and more profitable.
- Operating hours on site can be accurately recorded, for running time calculations needed for rental machines, etc.



Multiple locations



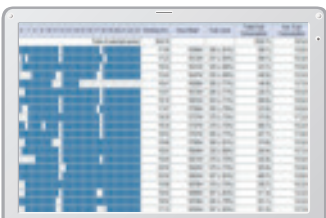
Daily report



Work data

Fuel consumption data

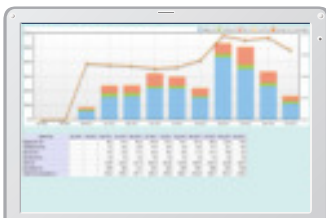
- Data on fuel consumption and idling times can be used to indicate improvements in fuel consumption.



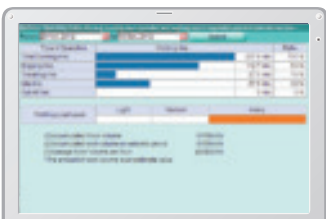
Fuel consumption

Graph of work content

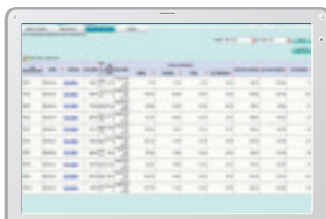
- The graph shows how working hours are divided among different operating categories, including digging, idling, traveling and optional operations (N&B).



Fuel consumption graph



Idle hours

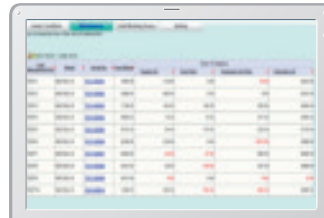


Work status

Maintenance data and warning alerts

Machine maintenance data

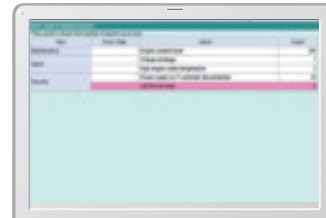
- Provides maintenance status of separate machines operating at multiple sites.
- Maintenance data is also relayed to KOBELCO service personnel, for more efficient planning of periodic servicing.



Alarm

Warning alerts

- This system triggers an alert if an anomaly is sensed, preventing damage that could result in machine downtime.



Alarm

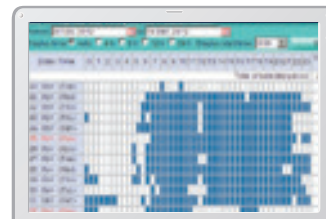
• Status check possible from cell phones

- Data can be obtained by e-mail through the Internet, using a computer or cell phone.



• Daily/monthly reports

- Operational data downloaded onto a computer helps in formulating daily and monthly reports.

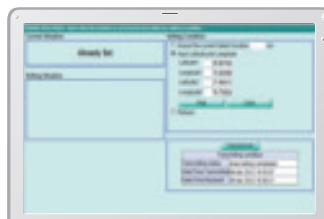


Daily reports

• Security system

Engine start alarm

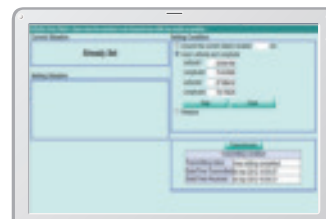
- The system can be set to sound an alarm if the machine is operated outside designated time.



Engine start alarm outside prescribed work time

Area alarm

- It can also trigger an alarm if the machine is moved out of its designated area to another location.



Alarm for outside of reset area