

KOBELCO

That's KOBELCO!

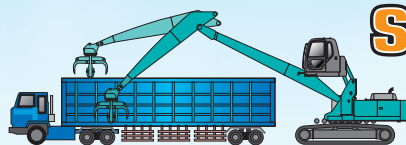
Your First Choice

Scrap Loader

Attachments with wider working radius for material handling applications

A base machine with the lowest fuel consumption in its class

ACERA
Geospec
SK260_{LC}
SK350_{LC}
SK480_{LC}



Offering excellent visibility from the elevated cab

The cab reaches a height of approx. 6 m.
Smooth truck loading is ensured.

Elevation range

2,800 mm

(SK260LC, SK350LC, SK480LC)

Elevated height

5,880 mm

(SK260LC)

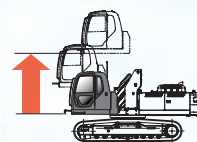
5,980 mm

(SK350LC)

6,140 mm

(SK480LC)

*From the ground to the top of the cab



Note: The grapple fitted to the machine is not a KOBELCO product.

Photos show Japanese specifications. Model names, logos and decals are those used in Japan.

Scrap loaders operating at scrap yards



Safety Features

Improved safety features

- Emergency cab lowering device
- Cab elevation alarm
- Cab under-mirror
- Cab raising/lowering switch (fail-safe type)



● Cab front screen guard for upper and lower windows



● Safety valve



● Rear view monitor / camera (option)



Further Reduction in Fuel Consumption

1 Hydraulic system

By thoroughly analyzing the losses in the hydraulic piping, KOBELCO has built a new hydraulic system with minimized energy loss.



2 Next generation electronic engine control

The common rail type, high-pressure fuel injection engine is equipped with a cooled EGR (exhaust gas recirculation) device. Generating powerful medium-to-low speed torque, the new engine consumes less fuel while reducing emissions of PM and NOx.



3 Advanced control ITCS

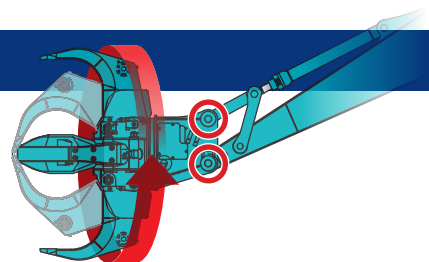
The latest model ITCS ensures excellent engine response to minimize engine output loss.

ITCS

ITCS (Intelligent Total Control System) is an advanced, computerized system that provides comprehensive control of all machine functions.

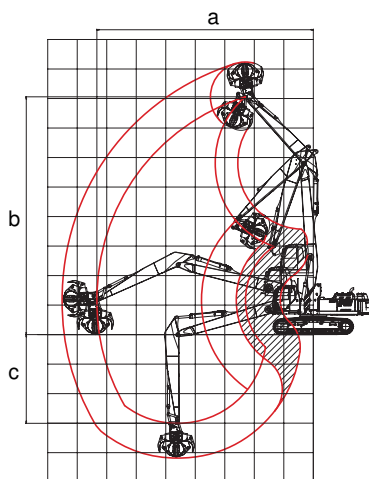
Attachment

- The attachment is firmly fixed in place by two pins.
- Hydraulics enable a 360-degree swing.
- It enables efficient loading, unloading, and scrap positioning.



Working Range

The wider working range raises efficiency



Model		SK260LC	SK350LC		SK480LC	
Boom length	mm	7,600	7,500	9,300	8,300	9,300
Arm length	mm	4,900	4,500	6,000	6,000	
a. Max. working reach	mm	12,290	11,540	14,210	13,640	14,670
b. Max. working height	mm	13,530	12,590	14,640	11,200	16,120
c. Max. working depth	mm	5,960	5,310	7,440	9,110	6,010

Note: The working range data is for the arm top point.

Note: This catalog may contain attachments and optional equipment that are not available in your area. And it may contain photographs of machines with specifications that differ from those of machines sold in your areas. Please consult your nearest KOBELCO distributor for those items you require. Due to our policy of continuous product improvements all designs and specifications are subject to change without advance notice.

Copyright by KOBELCO-CN H AUSTRALIA PTY. LTD. No part of this catalog may be reproduced in any manner without notice.

KOBELCO-CN H AUSTRALIA PTY. LTD.

Suite 3,181 Bay Street Birghton Vic 3186 Australia
Tel: +61 2-8863-4900 Fax: +61 3-9595-3803
www.kobelco.com.au/corporateinfo/index.html

Inquiries To: